

Tiltout Sponge Tray Kits

Suffix indicates cabinet width, includes 1 tray and 2 hinges.

- TOT15 Fits SB15 & SB30
- TOT18 Fits SB15 & SB30

Stem Glass Holder

12" Deep, fits under wall upper cabinets. Suffix indicates length in inches.

- SGH24
- SGH30
- SGH36

China Display Rack

34" long, 12 3/8" high trimmable installation in bookshelves.

- CDR-34

Cook Book Rack

Fits under wall cabinets.

- CB-RACK

Cuttery Insert with Cutting Board

Replaces a drawer in Kitchen Base Cabinet. Available to fit B15 and B18 Cabinets.

- CUTTRAY-B15
- CUTTRAY-B18

Shelf / Bar Support Bracket

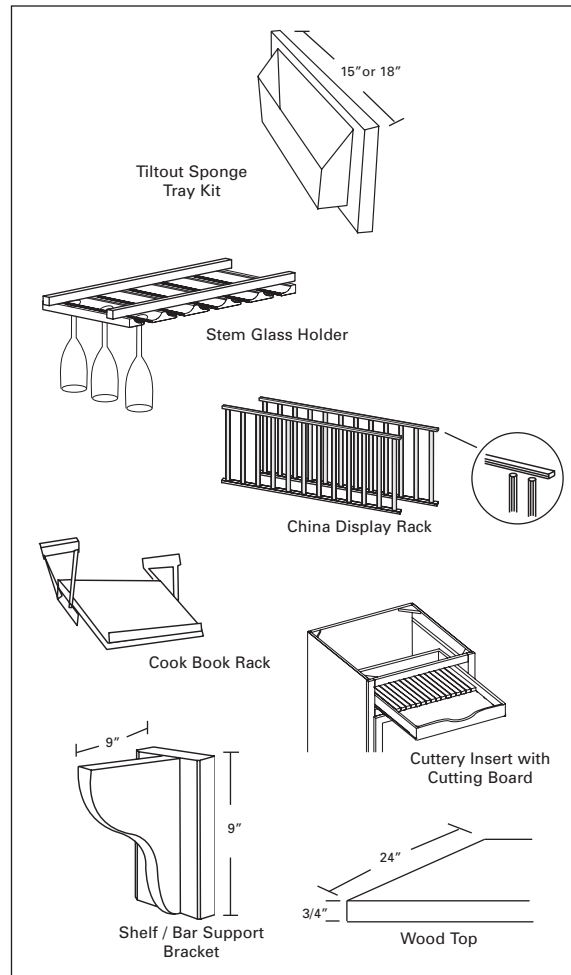
9" high, 9" long, 3/4" wide.

- SS9

Cabinet Tops

3/4" Plywood, 24" Deep, Priced per linear foot. Double the price for tops deeper than 24". Available in Western cabinet exterior colors.

- WOOD TOP



Concealed Hinges

110 degree swing, six way adjustment (Woodmont) 35MMHNG

Cabinet Stains

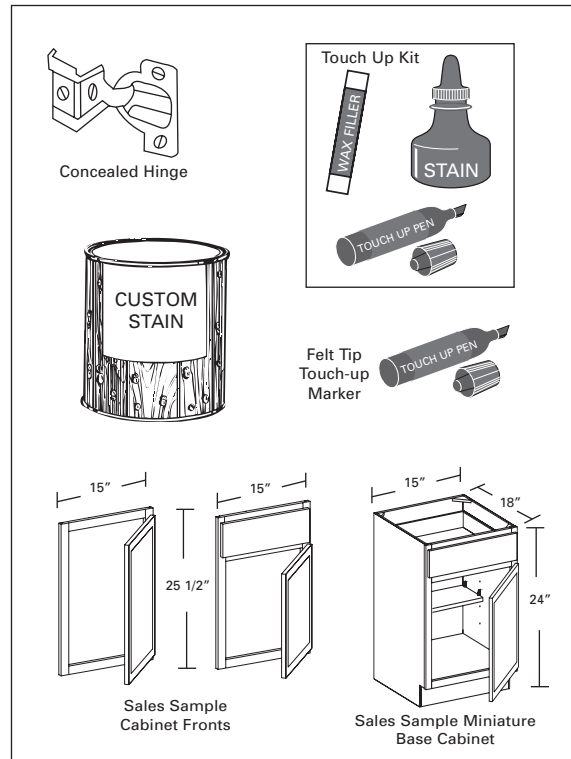
Available in standard cabinet exterior colors

- QTSTAIN One Quart
- GALSTAIN One Gallon

Touch-Up Supplies

Touch-up Kit includes 1 wax filler/crayon, touch-up marker and 1 bottle of topcoat TUKIT

Felt tip touch-up marker available in standard cabinet exterior colors TUMARKER



Sales Sample Cabinet Front

Front with 1 Full Height Door

15 X 25 1/2 Frame

- VF15FDSAMPLE 15" X 25 1/2"

1 Door & 1 Drawer front on standard

15 X 25 1/2 Frame

- VF15SAMPLE 15" X 25 1/2"

Sales Sample Miniature Base Cabinet

- 152418 MINIBASE